

G DATA CLIENT SECURITY BUSINESS

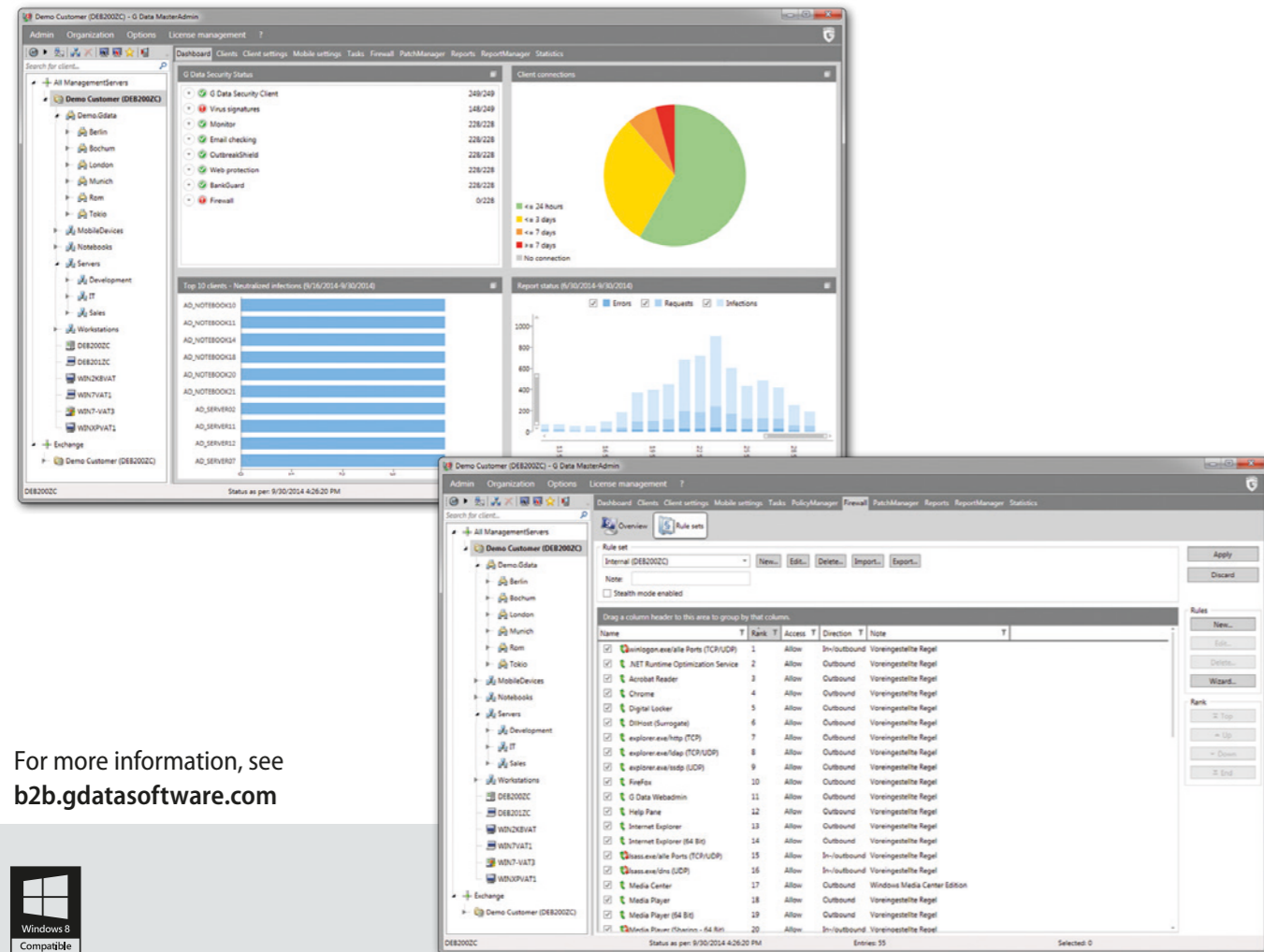
READY FOR ANY THREAT - WITH VIRUS PROTECTION AND CLIENT FIREWALL

G DATA CLIENT SECURITY offers the best possible end-to-end protection for company data of any type against threats from viruses, trojans, spam, and hackers. It also provides a secure barrier against virus epidemics, sabotage, and theft.

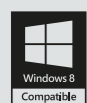
The new AntiSpam function in the Exchange plug-in, support for additional Linux distributions and protection against malicious USB devices by the integrated USB KEYBOARD GUARD now offer even more security for your company.

About G DATA
G DATA has been carrying out research for your security for 30 years. The result is exceptional, comprehensive protection for your PC, which is easy to install, simple to operate and offers excellent performance levels.

That's **GERMAN SICHERHEIT**.



For more information, see b2b.gdatasoftware.com



COMPLETE CLIENT PROTECTION

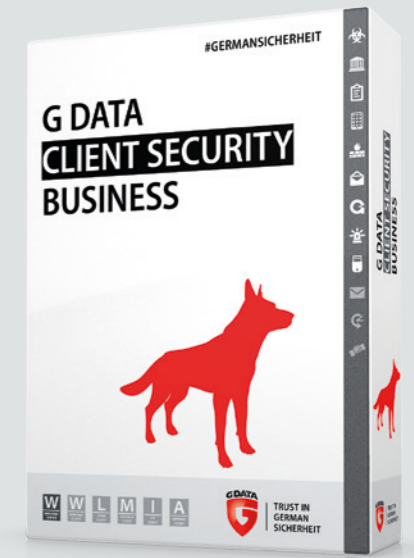
CloseGap hybrid technology	Maximum protection through proactive, signature-based detection
G DATA BankGuard 2.0	Secure online payment transactions - no browser add-on or additional software required
Behaviour monitoring of files	Even protects against unknown viruses
NEW! Protection against malicious USB devices	The integrated USB KEYBOARD GUARD reliably protects your clients against malicious USB devices pretending to be keyboards.
Integrated protection against spam and infected email	Add-on for Microsoft Outlook and POP3 and IMAP accounts
Powerful firewall	Monitors all incoming and outgoing connections, and protects against DoS attacks, port scans etc.
OPTIMIZED! Antivirus for Linux clients	Now with support for even more distributions

CENTRAL ADMINISTRATION

Simple administration and fast overview	Manage installations, virus scans and authorizations for all clients centrally
Simplified installation overview	With status reports and installation history display
Re-engineered dashboard	For a user-friendly overview of all relevant information, including context-based help
Remote control	Also possible from anywhere via web interface - even from mobile browsers
ActiveDirectory connection	For transferring existing group structures and automated client installation
OPTIMIZED! Mobile Device Management	Central administration of mobile Android and iOS end devices with theft protection, app checking, company phone book, call filter and much more (features can vary from system to system)
Software and hardware directory	Detailed display of the entire inventory
Award-winning service and support	The development and support teams work closely together - for the best, first-hand support, 24/7/365

OPTIONAL MODULES

OPTIMIZED! MailSecurity	Mail server-independent, central gateway solution with virus and spam filter (SMTP/POP3) for any mail server such as Exchange, Notes etc. Includes plug-in for MS Exchange 2007 to 2013
Central client backups	Back up and manage the data on every company PC
PatchManagement	Centrally controlled software updates for all clients in the network
Antivirus for Mac	Also reliably protects clients with Mac OS in your network against viruses and other threats



System requirements

G DATA Security Client, ManagementServer, G DATA MailSecurity MailGateway (32 bit / 64 bit): systems with Windows 8 / 7 / Vista / XP (32 bit only), Windows Server 2003 / 2008 / 2012, 1 GB RAM or more

G DATA MailSecurity (Microsoft Exchange plug-in, 64 bit): Microsoft Exchange 2007 to 2013

CloseGap, © 2013-15 G DATA Software AG. Android is a trademark of Google Inc. Use of this trademark is subject to Google Permissions. Microsoft®, Windows®, Windows Vista™, Windows® 8 and Windows® 7 are either registered trademarks or trademarks of Microsoft Corporation in the United States and/or other countries.